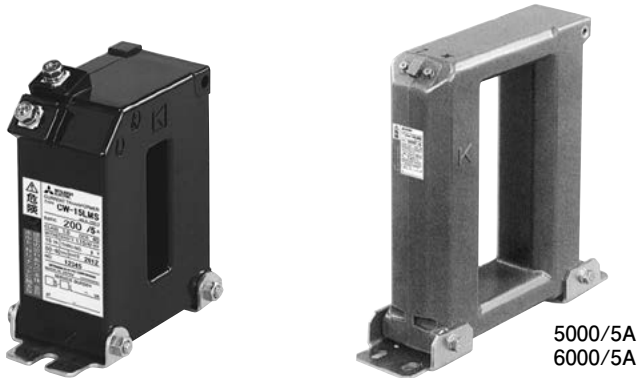


# CW Series Low-voltage Current Transformers (less than or equal to 1100V)

## CW-15LMS Busbar wiring/Rectangular window through type



### Use

- General-use meters

### Features

- Secondary terminal insulation cap (page 34) is available as an option. (less than or equal to 4000/5A)

## Specifications

Applicable standard: JIS C 1731-1

Type	Rated primary current (A)	Secondary current (A)	Rated burden (VA)	Accuracy (class)	Overcurrent strength (times)	Highest voltage/withstand voltage (kV)	Frequency (Hz)	External dimensions/Mounting dimensions <sup>*1</sup>				Square window dimensions (mm)	Mass (kg)
								Vertical mount	Horizontal mount	Direct mounting on busbar <sup>*2</sup>			
										1 busbar	2 busbars		
CW-15LMS	200	5	15	1.0	40	1.15/4/-	50 or 60	Fig. 1	Fig. 2	Page 26 Fig. 1	—	14×55	1.1
	250										—		
	300								—				
	400							Fig. 3	Fig. 4		—	14×80	0.6
	500												
	600							Fig. 5	Fig. 6		—	28×105	1.1
	750												
	800												
	1000							Fig. 7	Fig. 8		Page 26 Fig. 2	48×160	1.2
	1200												
	1500												
	2000												
	2500							Fig. 9	Fig. 10	—	—	4.8	
	3000												
	4000							Fig. 11	Fig. 12	—	—	88×217	14
<sup>*3</sup> 5000													
<sup>*3</sup> 6000													

### Notes

- \*1 Standard products must be mounted vertically.
- \*2 Busbar direct mounting brackets are sold separately.  
When ordering, specify the desired body type and rated primary current.
- For rated primary currents of 1000 to 2000A, also specify the number of busbars.
- \*3 An epoxy resin mold is used to insulate rated primary currents of 5000A and 6000A.
- \*4 Withstand voltage value indicates commercial power frequency withstand voltage/lightning impulse withstand voltage.
- \*5 Product weight may vary due to changes in core characteristics.
- \*6 When mounting the bus bar, locate it in the center of the through hole, so that it is not in contact with the inside of the through hole.

# External Dimensions

Vertical mount	Horizontal mount
CW-15LMS 200 to 300A	

Fig. 1

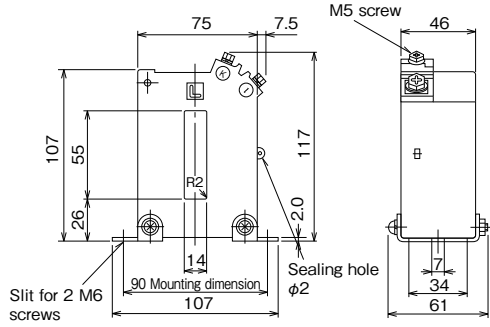
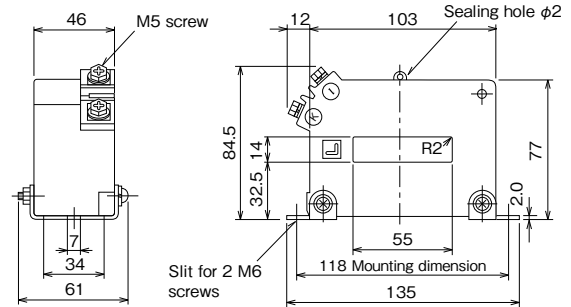


Fig. 2



CW-15LMS 400 / 500A	
---------------------	--

Fig. 3

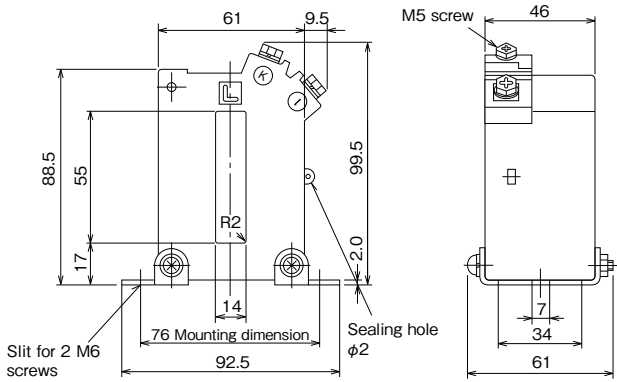
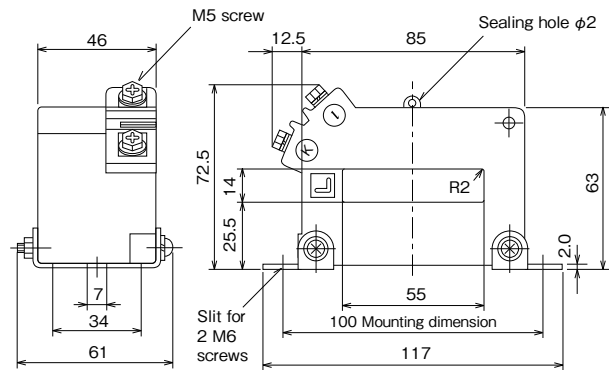


Fig. 4



CW-15LMS 600 to 800A	
----------------------	--

Fig. 5

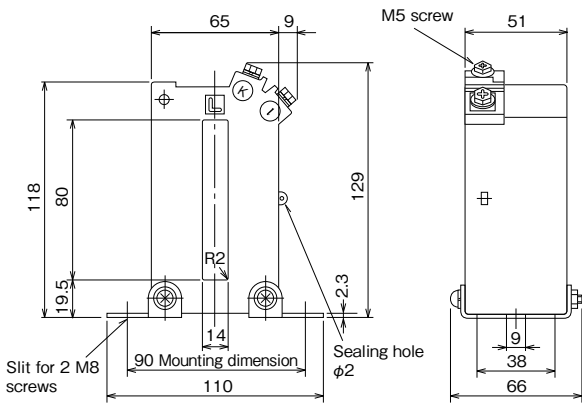
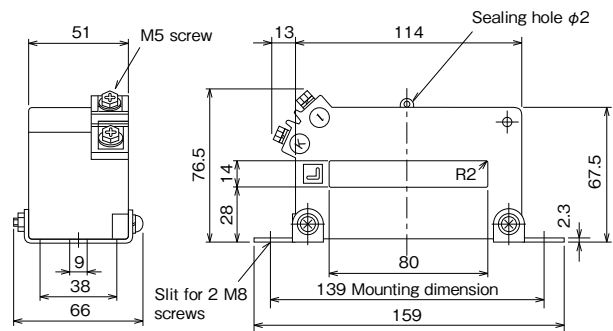


Fig. 6



Vertical mount	Horizontal mount
----------------	------------------

CW-15LMS 1000 to 2000A

Fig. 7

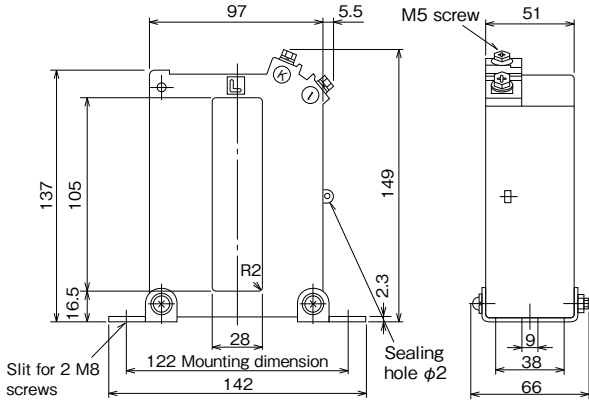
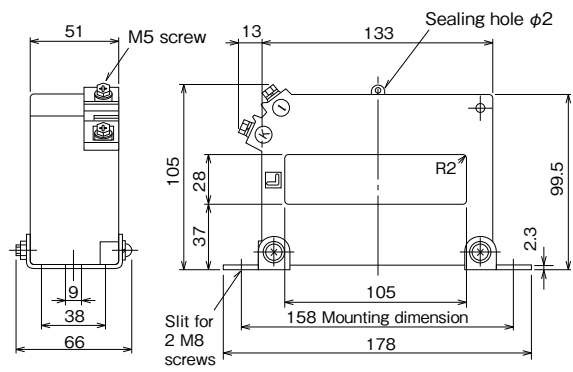


Fig. 8



CW-15LMS 2500 to 4000A

Fig. 9

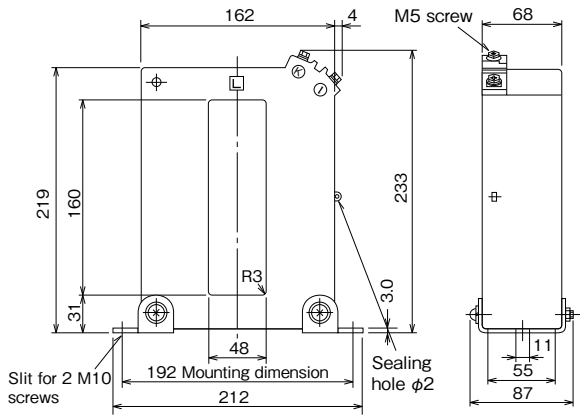
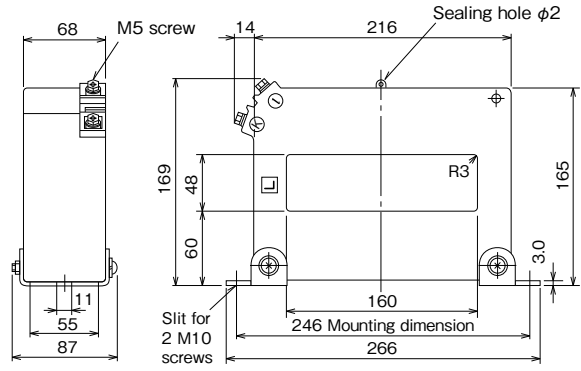


Fig. 10



CW-15LMS 5000 / 6000A

Fig. 11

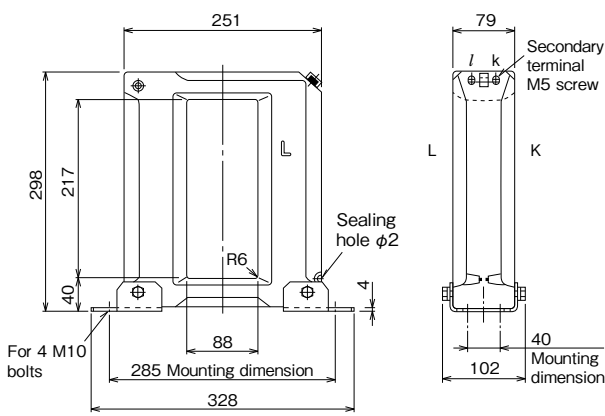


Fig. 12

