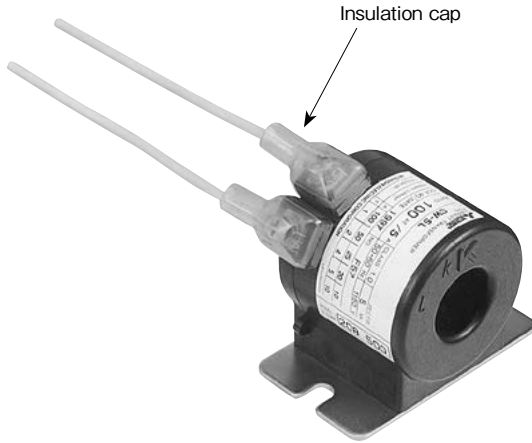


Insulation Cap for CW Low-voltage Current Transformers

CW-M1/CW-M2/CW-M3



Features

- Cap can be installed without removing the crimp-type terminal.
- Cap covers the entire terminal, preventing any live part from being exposed.
- Insulation cap is specially designed to fit, so product height is virtually unchanged even after mounting.
- Cap is half transparent, allowing terminal tightness can be checked without removing it.

Type

Type	Applicable model	Order Qty.
CW-M1	Secondary terminals of CW-L, LP, LM, LS and LMS CTs (less than or equal to 2000A)	100 pieces
CW-M2	Primary terminals of CW-LP and LS CTs	100 pieces
CW-M3	Secondary terminals of CW-40LM and 15LMS (2500 to 4000A)	100 pieces

How to Order

Type	Quantity
CW-M1	500

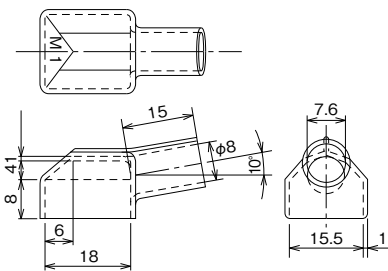
Orders must be in units of 100 pieces.

List of Applicable Models

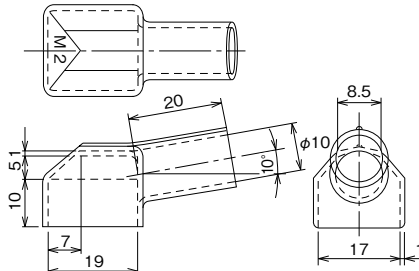
Current transformer name	Rating	Insulation cap			Remarks
		CW-M1	CW-M2	CW-M3	
CW-5L	60 to 750A	2 pieces	—	—	For secondary terminal
CW-15L	100 to 750A	2 pieces	—	—	For secondary terminal
CW-40L	150 to 750A	2 pieces	—	—	For secondary terminal
CW-5LP	1 to 50A	2 pieces	2 pieces	—	For primary and secondary terminals
CW-15LP	1 to 50A	2 pieces	2 pieces	—	For primary and secondary terminals
CW-40LP	1 to 50A	2 pieces	2 pieces	—	For primary and secondary terminals
CW-15LM	150 to 750A	2 pieces	—	—	For secondary terminal
CW-40LM, 15LMS	200 to 2000A	2 pieces	—	—	For secondary terminal
CW-40LM, 15LMS	2500 to 4000A	—	—	2 pieces	For secondary terminal
CW-15LM	1500 to 4000A	—	—	2 pieces	For secondary terminal
CW-15LS	5 to 30A	2 pieces	2 pieces	—	For primary and secondary terminals
CW-15LS	40 to 750A	2 pieces	—	—	For secondary terminal

External Dimensions

CW-M1



CW-M2



CW-M3

