

9. Lead Wire Terminal Block

(1) Vertical lead wire terminal block (SLT)

The lead wire terminal blocks for plug-in terminal blocks are available (P-LT). The drilling size of these terminal blocks differs from the standard size. Consult us for details.

For a flush plate type circuit breaker, a terminal block will be installed on the circuit breaker rear face. (Specify as FP-LT.)

Note *1 When the circuit breaker body is equipped with internal accessories and electrical operation device of motor-driven type (2) or spring charge type (2), the circuit breaker is normally provided with a lead wire terminal block.

MCCB

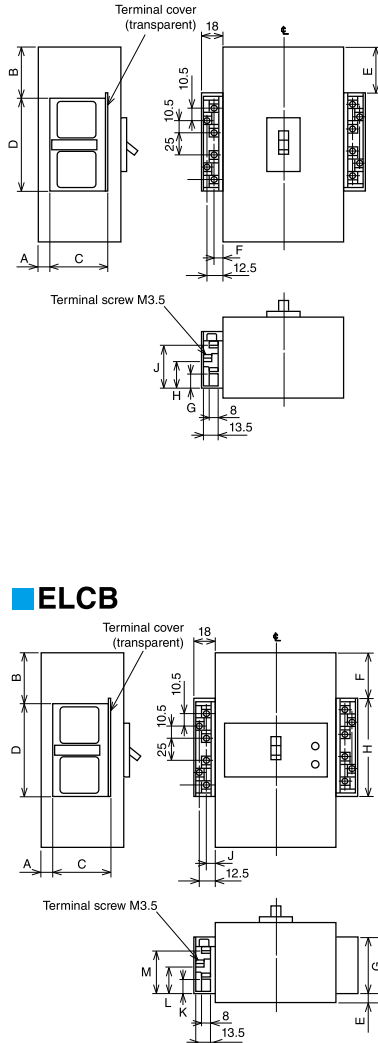


Table 6-18-1 Table of variable dimensions

(mm)

Model	A	B	C	D	E	F	G	H	J
NF30-FAU, NF50-FAU	7	1.5	44.5	69	-	9	10.5	22.5	34.5
NF100-SRU	16	16.5	44.5	86.5	16.5	6	10.5	22.5	34.5
NF100-HRU	22	16.5	44.5	86.5	16.5	6	10.5	22.5	34.5
NF50-SVFU	16.5	17	44.5	86.5	17	6	10.5	22.5	34.5
NF32-SV, NF63-CV/SV/HV NF63-HDV	7	26.5	54	86.5	26.5	7	14	26	38
NF100-CV/FU	7	36.5	54	86.5	36.5	7	14	26	38
NF125-CV/SV/HV	7	26.5	54	86.5	26.5	7	14	26	38
NF125-SVU/HVU	7	47.5	54	86.5	47.5	7	14	26	38
NF125-UV	7	87.5	54	86.5	87.5	7	14	26	38
NF250-UV	7	119	54	86.5	119	7	14	26	38
NF125-SEV/HEV/HDVA NF250-CV/SV/HV/SEV/HEV/HDVA	7	44	54	86.5	44	7	14	26	38
NF125-RV, NF250-RV	7	28.5	54	86.5	28.5	7	14	26	38
NF250-CVU/SVU/HVU	7	54	54	86.5	54	7	14	26	38
NF400-CW/SW/SEW/HEW/REW, NF400-SWU/HWU NF630-CW/SW/SEW/HEW/REW	41	79.5	54	86.5	79.5	7	14	26	38
NF800-CEW/SDW/SEW/HEW/REW, NF630-SWU/HWU	88.5	54	86.5	88.5	7	14	26	38	
NF1000-SEW, NF1250-SEW/SDW, NF1600-SEW/SDW	62.5	173	52	86.5	173	7	14	26	38
NF400-UEW(3P)	138	119.5	54	86.5	119.5	7	14	26	38
NF400-UEW(4P), NF800-UEW	135.5	54	86.5	135.5	7	14	26	38	
NF50-FHU	14	5	44.5	86.5	5	7	10	22	34
NF100-FHU	14	7	44.5	86.5	4	7	10	22	34
NF400-HDW	47	79.5	54	86.5	79.5	7	14	26	38
NF800-HDW	47	88.5	54	86.5	88.5	7	14	26	38

Note *1 The terminal positions are different from those shown in the left figure. Consult us for details.

Remark: 1. Terminal screw tightening torque: M3.5 ... 1.1 ± 0.1N·m

ELCB

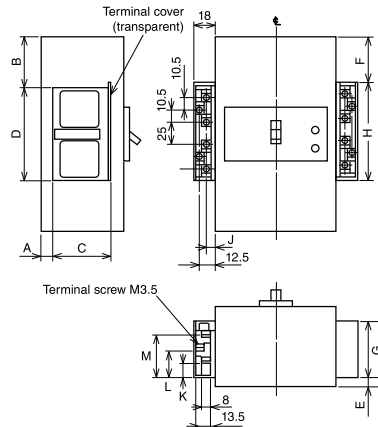


Table 6-18-2 Table of variable dimensions

(mm)

Model	A	B	C	D	E	F	G	H	J	K	L	M
NV30-FAU, NV50-FAU	7	1.5	44.5	69	-	-	-	-	9	10.5	22.5	34.5
NV100-SRU	16	16.5	44.5	86.5	-	-	-	-	6	10.5	22.5	34.5
NV100-HRU	22	16.5	44.5	86.5	-	-	-	-	6	10.5	22.5	34.5
NV50-SVFU	16.5	17	44.5	86.5	16.5	17	54	86.5	6	10.5	22.5	34.5
NV32-SV, NV63-CV/SV/HV	7	26.5	54	86.5	7	26.5	54	86.5	7	14	26	38
NV100-CV/FU	7	36.5	54	86.5	7	36.5	54	86.5	7	14	26	38
NV125-CV/SV/HV	7	26.5	54	86.5	7	26.5	54	86.5	7	14	26	38
NV125-SVU/HVU	7	47.5	54	86.5	7	47.5	54	86.5	7	14	26	38
NV125-SEV/HEV, NV250-CV/SV/HV/SEV/HEV	7	44	54	86.5	7	44	54	86.5	7	14	26	38
NV250-CVU/SVU/HVU	7	54	54	86.5	7	54	54	86.5	7	14	26	38
NV400-CW/SW/SEW/HEW/REW NV630-CW/SW/SEW/HEW/REW, NV400-SWU/HWU	41	79.5	54	86.5	26.5	79.5	52	92	7	14	26	38
NV800-SEW/HEW	41	88.5	54	86.5	26.5	88.5	52	92	7	14	26	38
NV50-FHU	14	5	44.5	86.5	14	5	44.5	86.5	7	10	22	34
NV100-FHU	14	7	44.5	86.5	14	4	44.5	86.5	7	10	22	34

Notes *1 The terminal positions are different from those shown in the left figure. Consult us for details.

Remark: 1. Terminal screw tightening torque: M3.5 ... 1.1 ± 0.1N·m

14-terminal SLT

SLT for installing three or more internal accessories on the left pole side

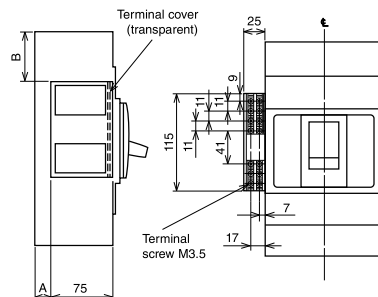


Table 6-18-3 Table of variable dimensions

(mm)

Model		A	B
MCCB	ELCB		
NF400-CW/SW/SEW NF400-HEW/REW	NV400-CW/SW/SEW NV400-HEW	20	60
NF630-CW/SW/SEW NF630-HEW/REW	NV630-CW/SW/SEW/HEW		
NF400-UEW(3P)	-	117	100
NF800-CEW/SDW/SEW NF800-HEW/REW	NV800-SEW/HEW	20	69
NF400-UEW(4P), NF800-UEW	-	117	116
NF1000-SEW, NF1250-SEW NF1600-SEW	-	35	154

Remarks: 1. The terminal positions are different from those shown in the left figure. Consult us for details.

2. Terminal screw tightening torque: M3.5 ... 1.1 ± 0.1N·m