

# Earth Leakage Circuit Breakers

## NV250-CV NV250-SV NV250-HV

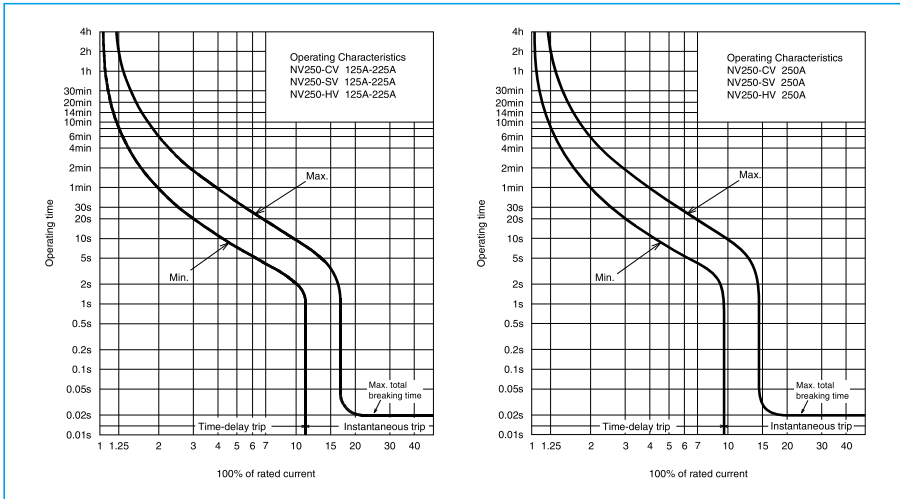


NV250-CV

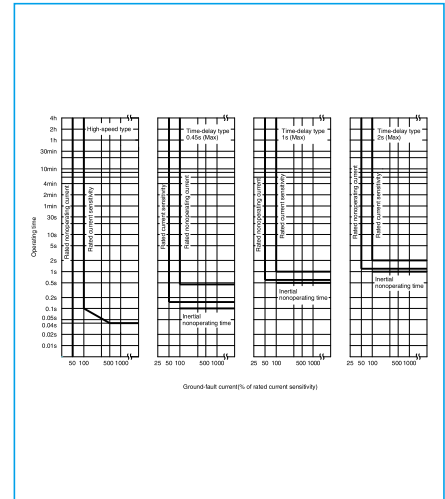
Model		NV250-CV	NV250-SV		NV250-HV	
Rated current In (A) Reference ambient temperature 40°C		125 150 175 200 225 250	125 150 175 200 225 250	175 200 225 250	125 150 175 200 225 250	125 150 175 200 225 250
Number of poles		3	3	4	3	4
Phase line		3φ3W, 1φ3W, 1φ2W	3φ3W, 1φ3W, 1φ2W	3φ4W	3φ3W, 1φ3W, 1φ2W	3φ4W
Rated operational voltage Ue (V) (*1)		AC 100-440	100-440	200-440	100-440	200-440
High-speed type	Rated current sensitivity (mA)	30 100/200/500 selectable	(30) 100/200/500 selectable		30 100/200/500 selectable	
	Max operating time (s)	at $I\Delta n$	0.1		0.1	
		at $5I\Delta n$	0.04		0.04	
Time-delay type	Rated current sensitivity (mA)	(100/200/500 selectable)	(100/200/500 selectable)		(100/200/500 selectable)	
	Max operating time (s)	(0.45/1.0/2.0 selectable)	(0.45/1.0/2.0 selectable)		(0.45/1.0/2.0 selectable)	
	Inertial operating time (s) (or more)	(0.1/0.5/1.0)	(0.1/0.5/1.0)		(0.1/0.5/1.0)	
Earth-leakage indication system		Mechanical type (button)	Mechanical type (button)		Mechanical type (button)	
Rated short-circuit breaking capacity (kA)	IEC 60947-2 EN 60947-2 (Icu/Ics)	AC	440V	15/12	36/36	65/65
			415V	25/19	36/36	70/70
			400V	25/19	36/36	75/75
			230V	36/27	85/85	100/100
			200V	36/27	85/85	100/100
			100V	36/27	85/85	100/100
Standard attached parts (Front connection)		Terminal screw: M8 (Bolt(Hex-socket))×16 (3P: 6pcs, 4P: 8pcs) Mounting screw: M4×0.7×55 (3P: 2pcs, 4P: 4pcs) Insulation barrier: (3P: 4pcs, 4P: 6pcs)				

Note \*1 Rated operational voltage of time-delay type is for 200-440V.

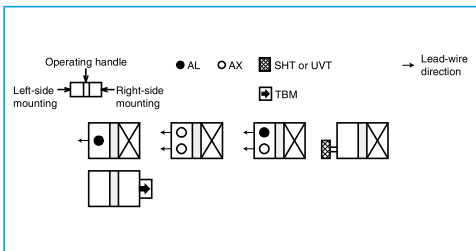
## Operating Characteristics



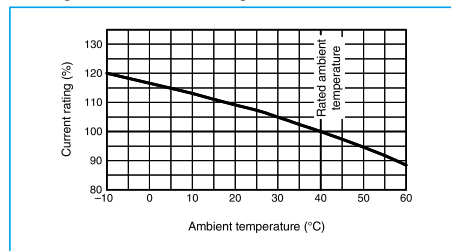
## Earth leakage Tripping Characteristics



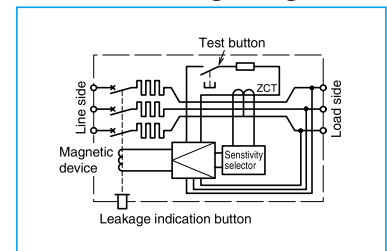
## Internal Accessories



## Temperature Compensation Curve



## Internal Wiring Diagram



## External Accessories

Accessories	Type name	Reference page	Accessories	Type name	Reference page
Operating handle	F	F-2SV	Mechanical interlock	MI	3P MI-05SV3
	V	V-2SV		4P MI-2SV4	
Lock cover	LC	LC-05SV	Terminal cover	Small	3P TCS-2SV3
Handle lock device	HL (*1)	HLF-05SV		4P TCS-2SV4	
		HLN-05SV		3P TCL-2SV3	
		HLS-2SV		4P TCL-2SV3L	
				4P TCL-2SV4	
				3P TTC-2SV3	
				4P TTC-2SV4	
				3P BTC-2SV3	
				4P BTC-2SV4	
				3P PTC-2SV3	
				4P PTC-2SV4	
				Electrical operation device	(*2)

Notes \*1 HLF types are used for OFF lock and HLN types for ON lock.  
\*2 Specify the working voltage. Refer to the reference page for type name.

