

Earth Leakage Circuit Breakers

NV400-CW NV400-SW

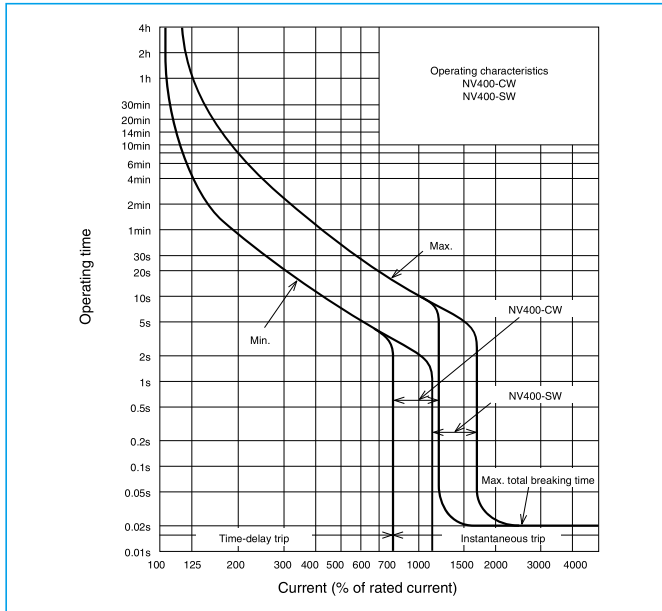


NV400-SW

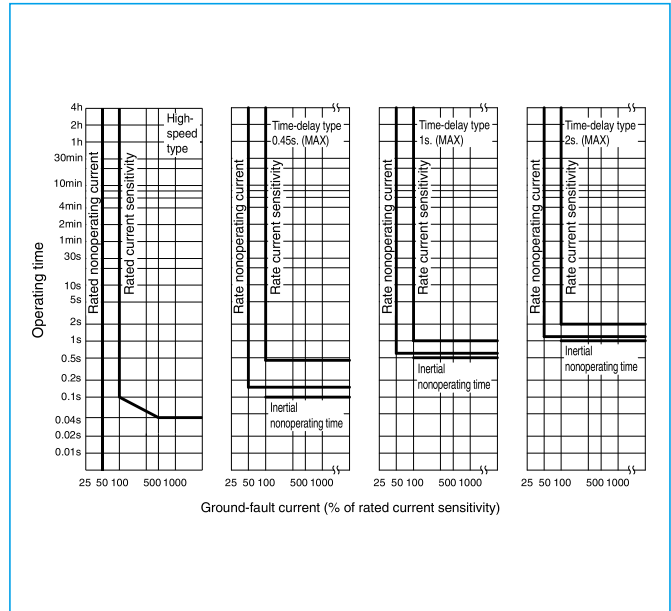
| Model | | NV400-CW | NV400-SW |
|---|--------------------------------|--|-------------|
| Rated current I _n (A) Reference ambient temperature 40°C | | 250 300 350 400 | |
| Number of poles | | 3 | |
| Phase line | | 3φ3W, 1φ3W, 1φ2W | |
| Rated operational voltage U _e (V) (*1) | | AC 100-440 | |
| High-speed type | Rated current sensitivity (mA) | (30) 100 · 200 · 500 Selectable | |
| | Max operating time (s) | 0.1 at I _{Δn} 0.04 at 5I _{Δn} | |
| Time-delay type | Rated current sensitivity (mA) | (100 · 200 · 500 Selectable) | |
| | Max operating time (s) | (0.45 · 1.0 · 2.0 Selectable) | |
| Inertial operating time (s) (or more) | | (0.1 · 0.5 · 1.0) | |
| Earth leakage protection characteristic | | Type AC | |
| Earth-leakage indication system | | Mechanical type (Button) | |
| Rated short-circuit breaking capacity (kA) IEC 60947-2 (I _{cu} /I _{cs}) EN 60947-2 | AC | 440V | 25/13 42/42 |
| | | 415V | 36/18 45/45 |
| | | 400V | 36/18 45/45 |
| | | 230V | 50/25 85/85 |
| | | 200V | 50/25 85/85 |
| | | 100V | 50/25 85/85 |
| Standard attached parts (Front connection) | | Terminal screw: M12 bolt×35 (3-pole: 6pcs) Mounting screw: M6×60 (4pcs) Insulation barrier: (4pcs) | |

Note *1 Rated operational voltage of time-delay type is for 200-440V.

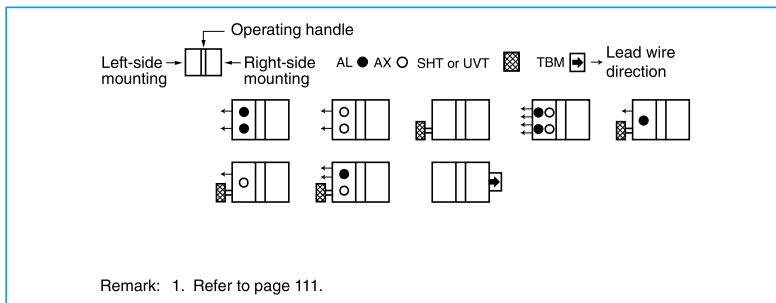
Operating Characteristics



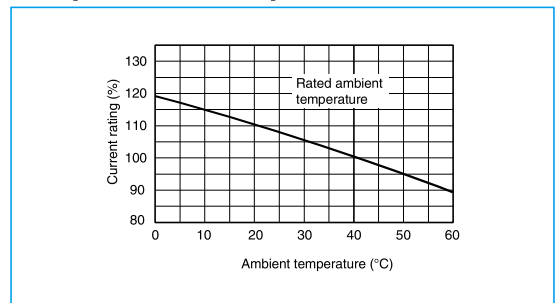
Earth Leakage Tripping Characteristics



Internal Accessories



Temperature Compensation Curve

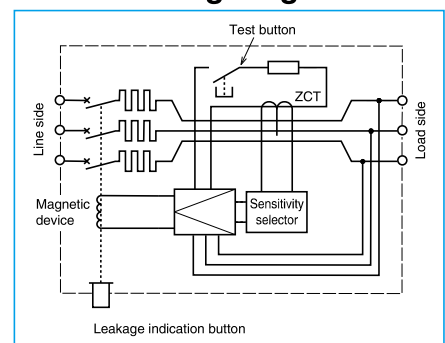


External Accessories

| Accessories | Type name | Reference page | Accessories | Type name | Reference page | |
|----------------------|-----------|----------------|-----------------------------|-----------|----------------|-----|
| Operating handle | F | F-4S | Auxiliary handle | HT | HT-4CW, HT-4SW | |
| | V | V-4S | | | 135 | |
| Mechanical interlock | MI | MI-4SW3 | Terminal device | Large | TC-L | 128 |
| | | | | Skeleton | TTC | |
| | | | Rear | BTC | BTC-4SW3 | |
| | | | Handle lock device | HL | HL-4CW, HL-4SW | 134 |
| | | | | HL-S | HLS-4SW | |
| | | | Electrical operation device | (*1) | 140 | |

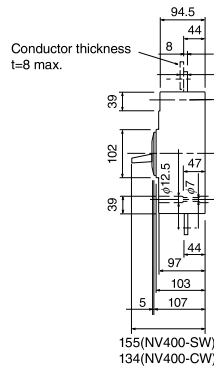
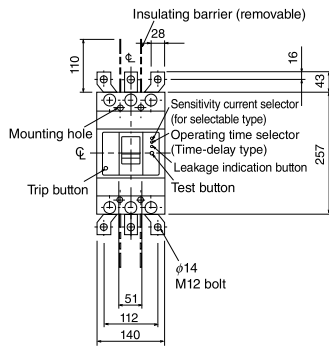
Note *1 Specify the operation method and voltage. Order in combination with the breaker unit.

Internal Wiring Diagram

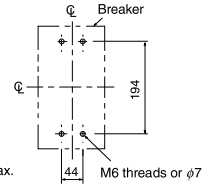


Outline Drawing

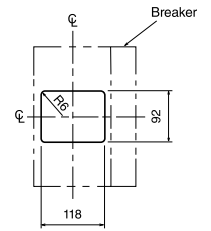
Front connection



Conductor thickness $t=8$ max.
Conductor drilling for direct connection



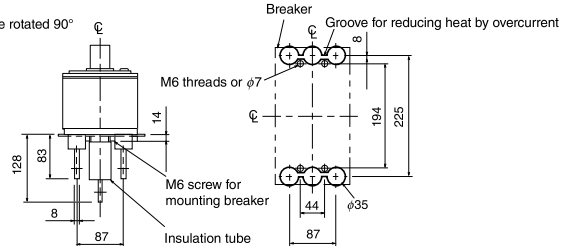
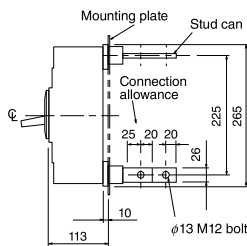
Drilling (Tapping)



1.0mm clearance on each side of the handle frame.

Front-panel cutout

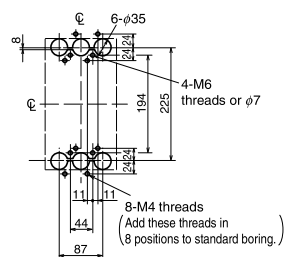
Rear connection



Drilling (Tapping)

Boring dimensions for rear connection type barriers (3-pole)

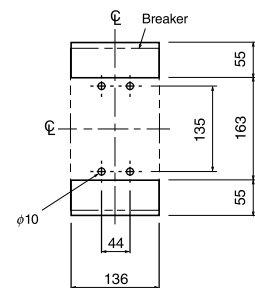
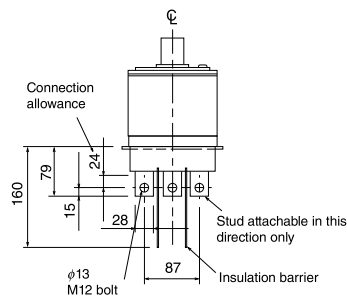
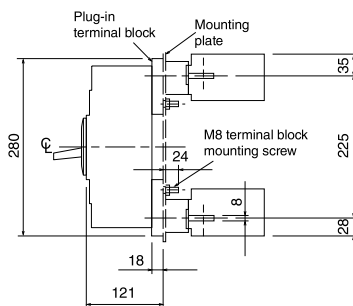
Line side



Load side

Note The bore dimensional drawing shows the breaker viewed from the rear.

Plug-in



Drilling (Tapping)