

# NF250-SXV NF250-LXV NF250-HXV

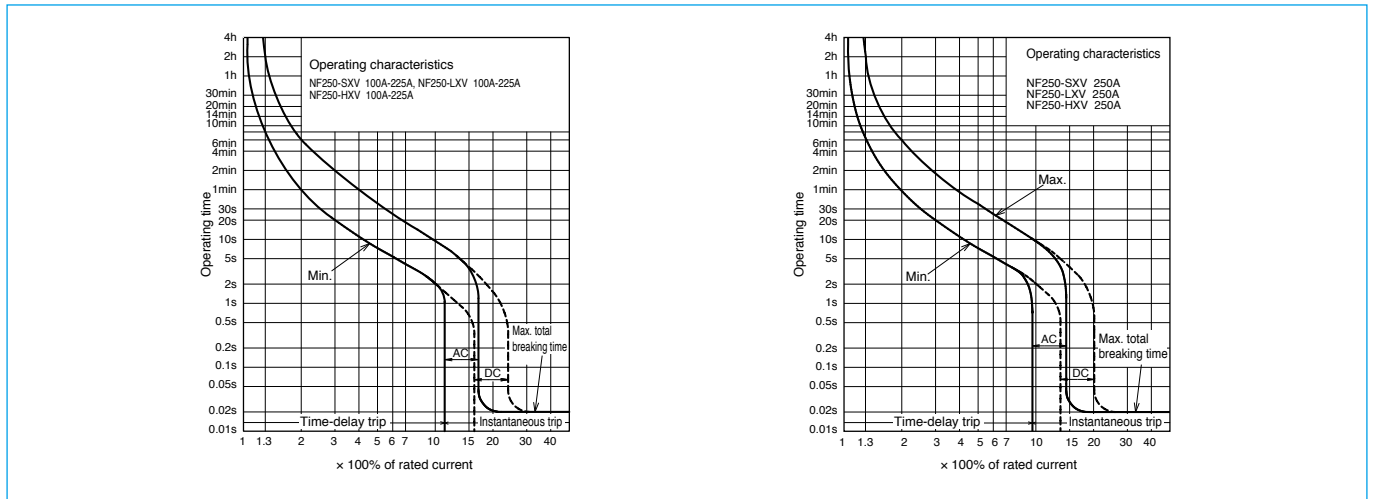


NF250-SXV

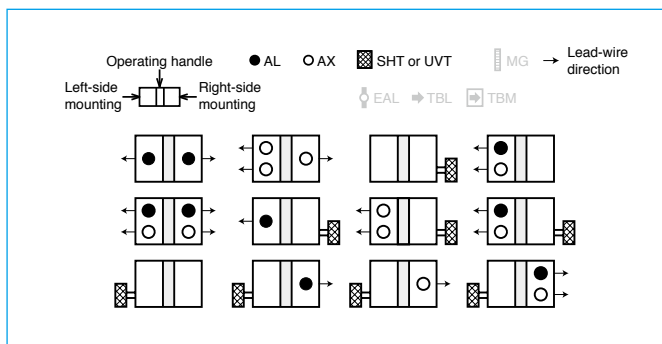
Model		NF250-SXV			NF250-LXV			NF250-HXV		
Rated current In (A)		(100) 125 150 160 175 200 225 250			(100) 125 150 160 175 200 225 250			(100) 125 150 160 175 200 225 250		
Number of poles		2	3	4	2	3	4	2	3	4
Rated insulation voltage Ui (V)		690			690			690		
Rated short-circuit breaking capacity (kA)	IEC 60947-2 EN 60947-2 (Icu/lcs)	AC	690V	8/8	8/8	10/8				
			500V	30/30	36/36	50/38				
			440V	36/36	50/50	65/65				
			415V	36/36	50/50	70/70				
			400V	36/36	50/50	75/75				
			380V	36/36	50/50	75/75				
			230V	85/85	90/90	100/100				
			200V	85/85	90/90	100/100				
		DC	300V	20/20 (*1)	20/20 (*1)	40/40 (*1)				
		Standard attached parts (front connection)		Mounting screw: M4×0.7×55 (2 and 3P: 2pcs, 4P: 4pcs) Insulation barrier: (2P: 2pcs, 3P: 4pcs, 4P: 6pcs)						

Notes \*1 Use two poles for three- and four-pole products. In this case, do not use the neutral pole of the four-pole products. If wired as shown on the right, three and four poles can be used for up to 500 and 600VDC, respectively.

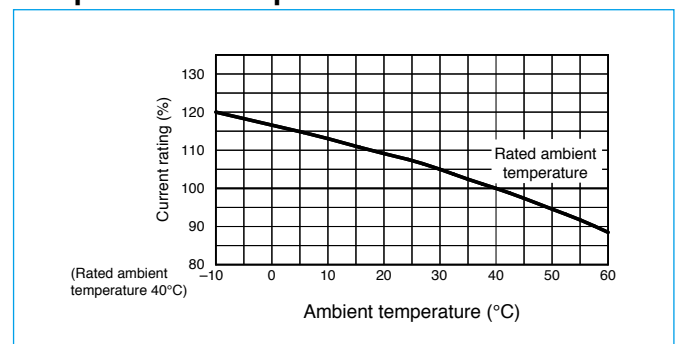
## Operating Characteristics



## Internal Accessories



## Temperature Compensation Curve

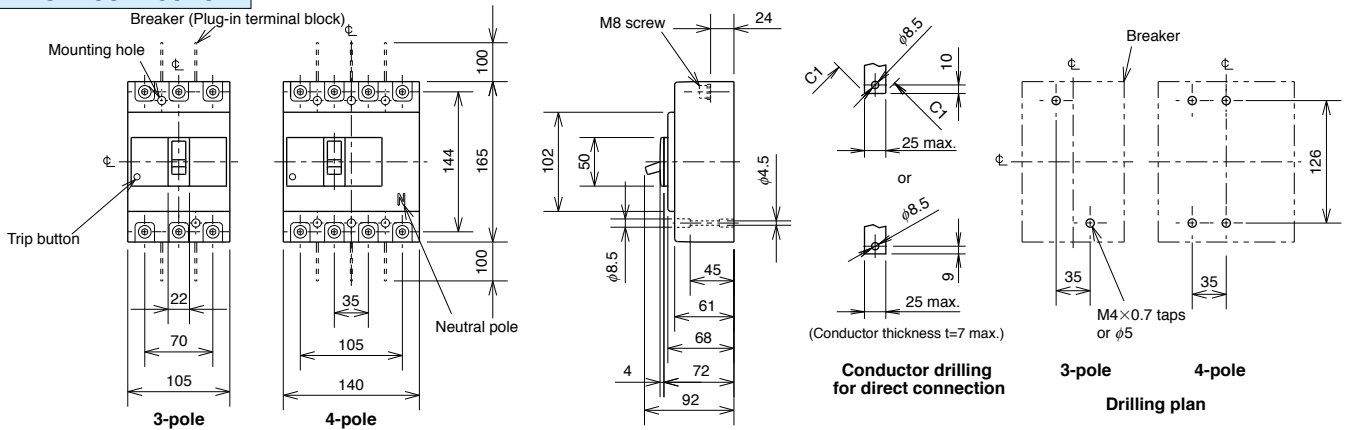


## External Accessories

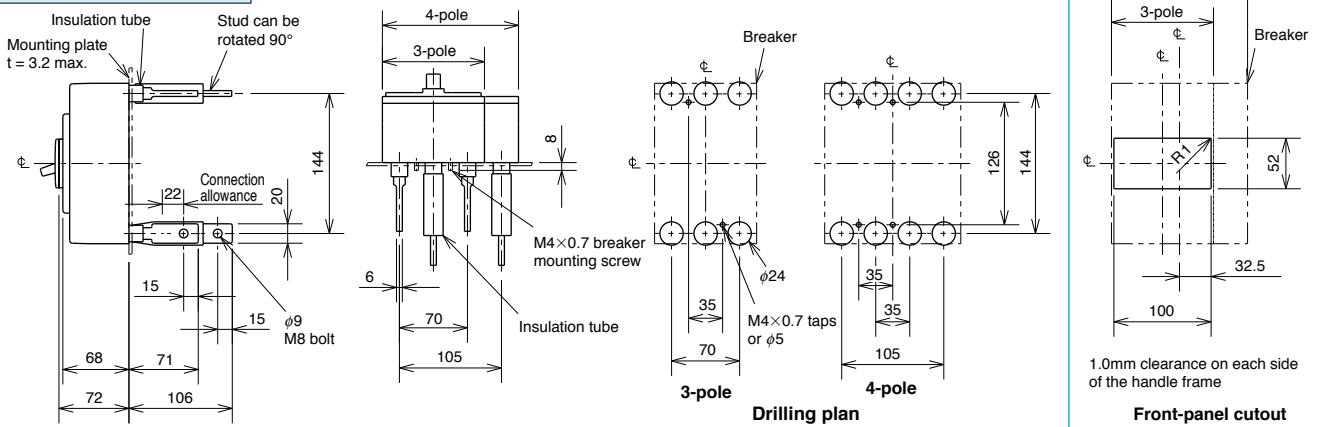
Accessories		Type name	Accessories		Type name	
Operating handle	F	F-2SV	Mechanical interlock	MI	2, 3P MI-05SV3	
	V	V-2SV		4P MI-2SV4		
Lock cover	LC	LC-05SV	Terminal cover	Small	TC-S 2, 3P TCS-2SV3	
Handle lock device	HL (*1)	HLF-05SV		Large	TC-L	2, 3P TCL-2SV3
		HLN-05SV				4P TCL-2SV3L
	HL-S	HLS-2SV		4P TCL-2SV4		
				Skeleton	TTC	2, 3P TTC-2SV3
			Rear	BTC	2, 3P BTC-2SV3	
			Plug-in	PTC	2, 3P PTC-2SV3	
			Electrical operation device		(*2)	

Notes \*1 HLF types are used for OFF lock and HLN types for ON lock.  
\*2 Specify the working voltage. Refer to the reference page for type name.

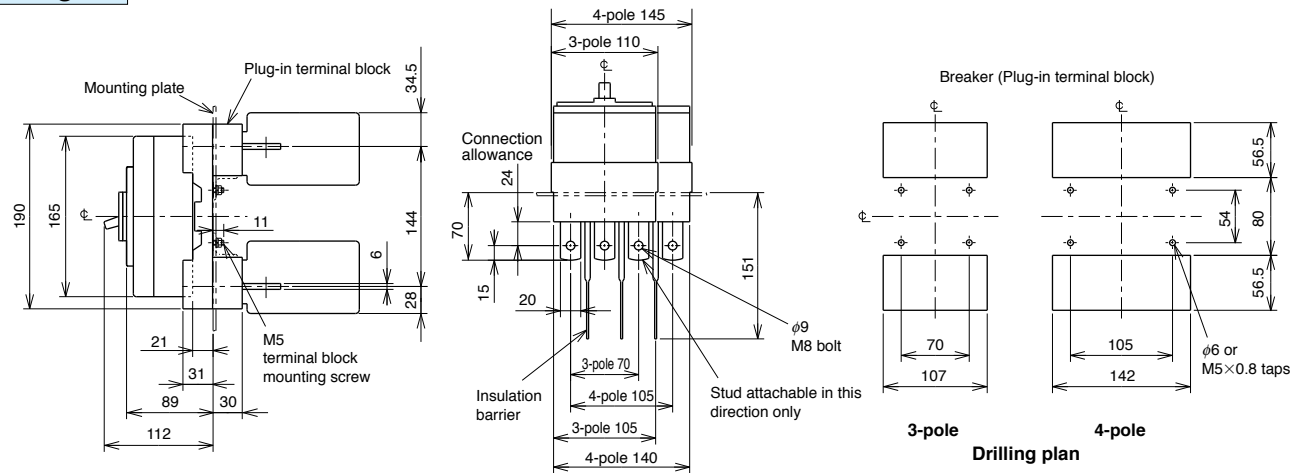
## Front connection



## Rear connection



## Plug-in



Remark: 1. 2-pole models are 3-pole models with the central pole removed.